

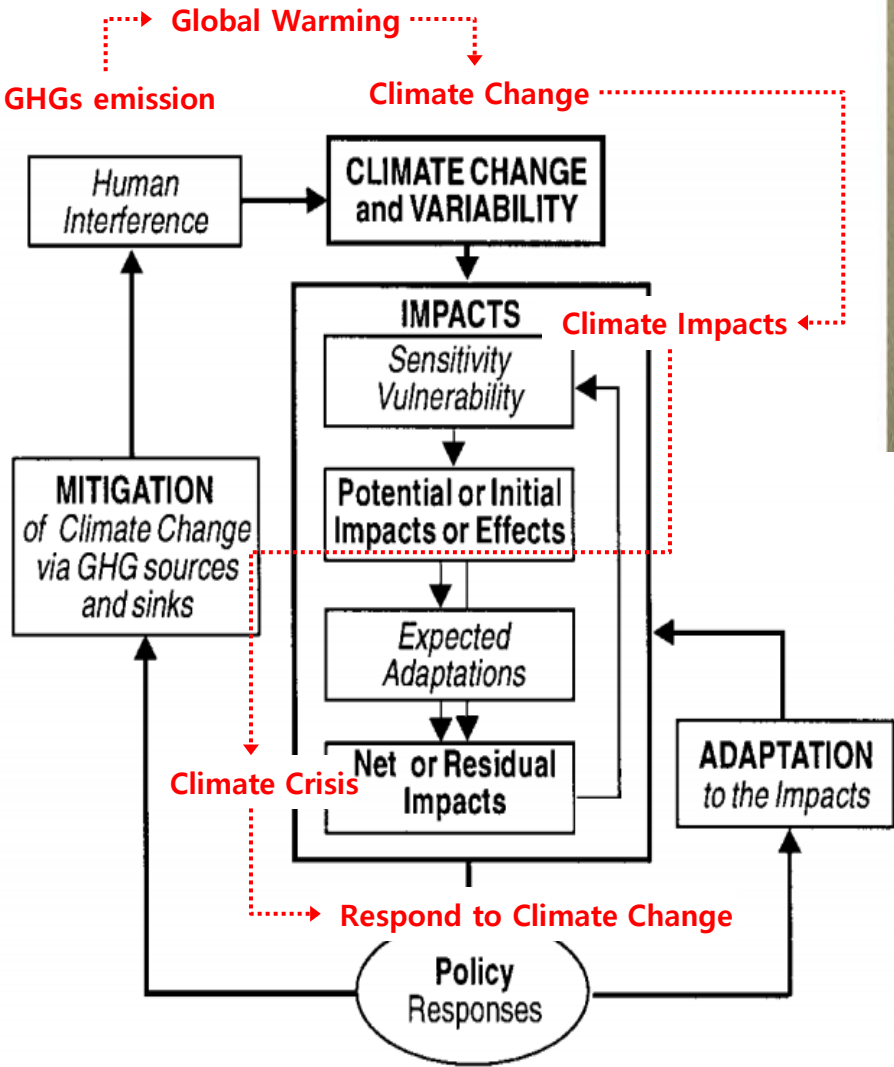
VALUABLE ADAPTATION INSIGHTS FOR THE SCIENTIFIC COMMUNITY

- FROM KOREA'S ADAPTATION EXPERIENCES

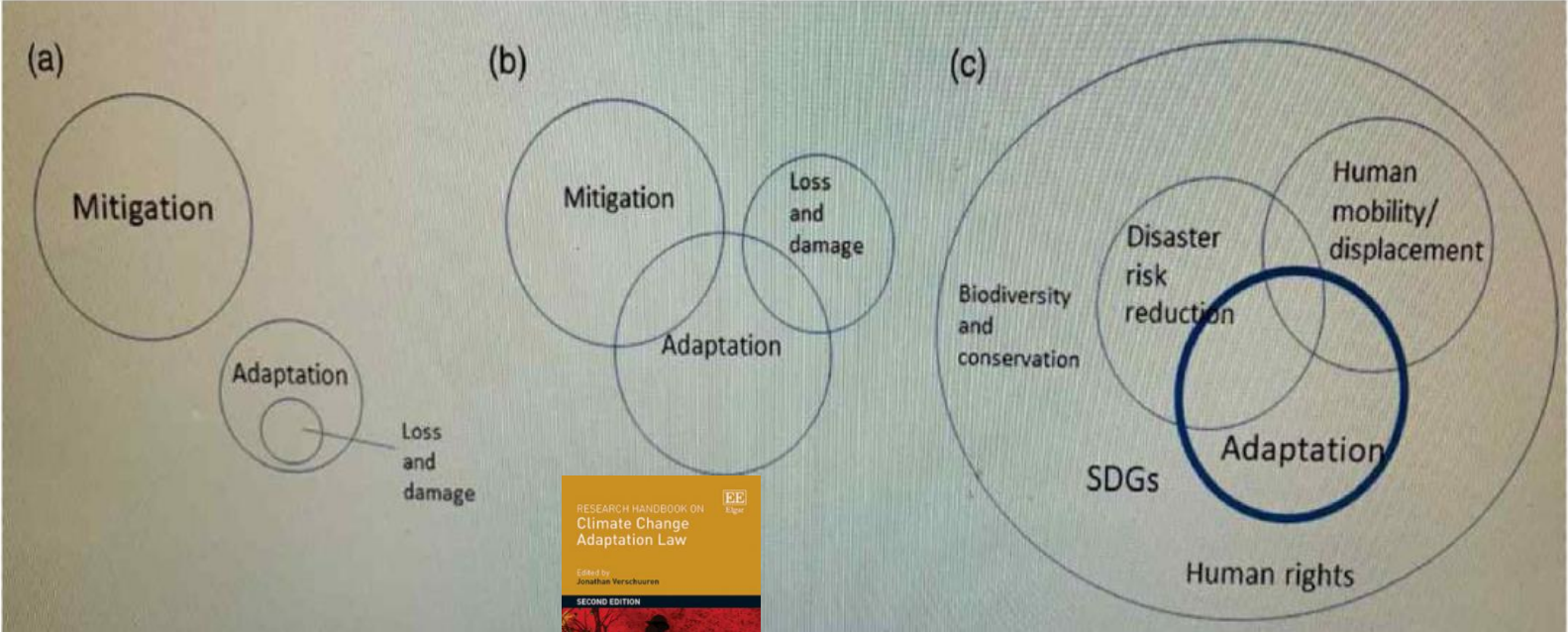
2023.10.20

Jiyoung Shin, Ph.D
Senior Research fellow, KEI KACCC
sjirang@kei.re.kr

Climate Change Adaptation



<Fig> Concept of Adaptation(smit et al, 1999)

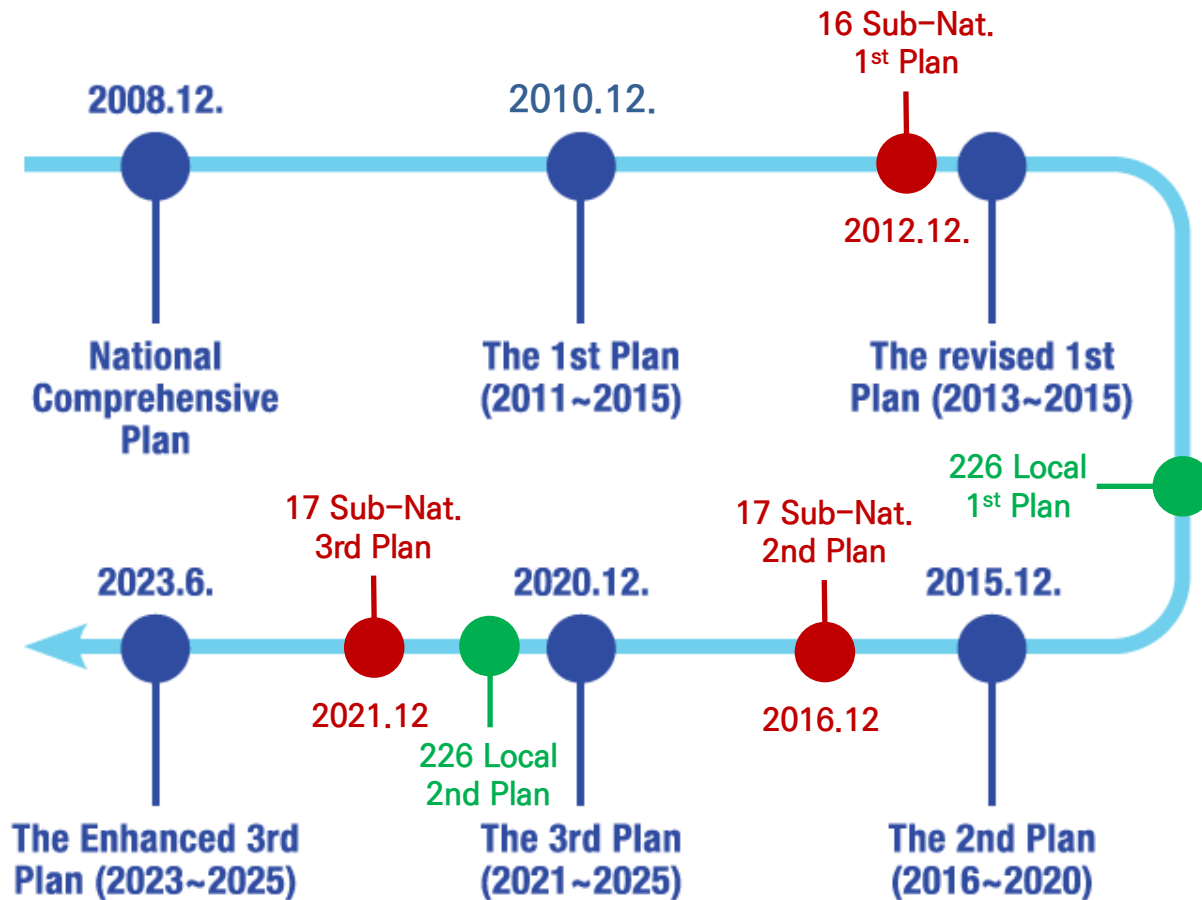


*자료 : 박태현(2022) 기후위기 적응법 : 제정 필요성과 방향(2022.5.2 “기후변화 적응 법제 강화 방향과 과제” 정책토론회 자료집)

1	Introduction to climate change adaptation <i>Jonathan Verschuuren</i>	9	Climate change adaptation and water law <i>Jonathan Verschuuren</i>
2	Climate change adaptation under the United Nations Framework Convention on Climate Change and related documents <i>Jonathan Verschuuren</i>	10	Climate change adaptation in marine and coastal areas and international law <i>Tim Stephens</i>
3	Adaptation, loss and damage and climate justice <i>Rosemary Lyster</i>	11	Climate change adaptation and biodiversity law <i>Arie Trouwborst</i>
4	Climate change-induced displacement, migration and international law <i>Nicola Jägers</i>	12	Climate change adaptation and land use law <i>Keith H. Hirokawa, Jonathan Rosenbloom and Michelle C. Zaludek</i>
5	Climate change adaptation and compensation <i>Michael Faure</i>	13	Climate change adaptation and green building <i>Tuula Honkonen and Seita Romppanen</i>
6	Climate change adaptation and disaster law <i>Dewald van Niekerk</i>	14	Climate change adaptation and environmental and pollution control law <i>Jonathan Verschuuren</i>
7	Climate change adaptation and public health law <i>Lindsay F Wiley</i>	15	Climate-induced disasters and electricity infrastructure <i>Rosemary Lyster, Daniel A. Farber and Robert R.M. Verchick</i>
8	Climate change adaptation and agricultural and forestry law <i>Robert W. Adler</i>	16	Security dimensions of climate change adaptation <i>Sophie Pieterneel de Bruin</i>

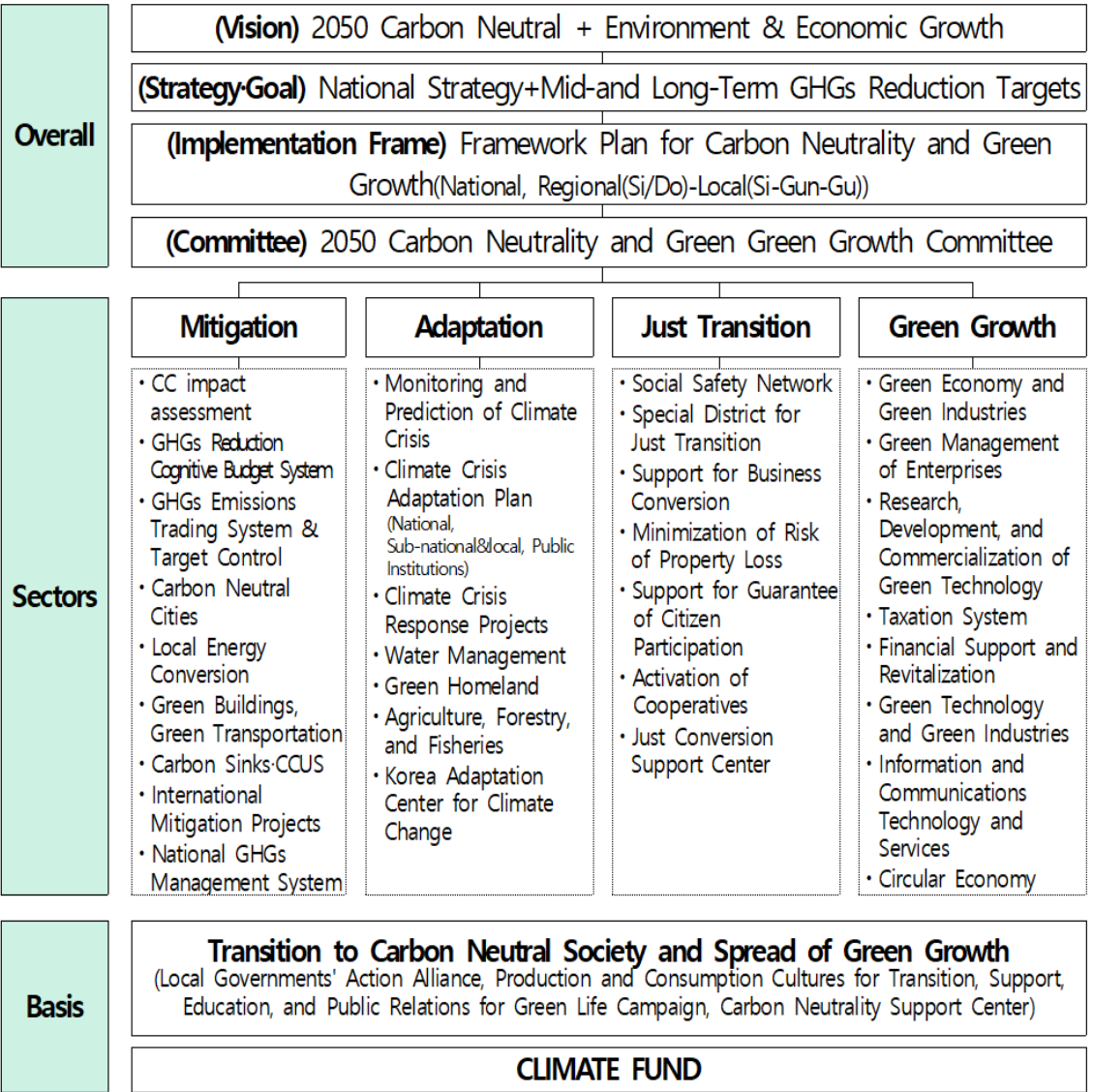
At Adaptation Phase 1.0

In March of this year, the Korean government submitted an Adaptation Communication(AC) to the UNFCCC. The AC contains the efforts made by Korea in adapting to climate change over the past approximately 15 years..



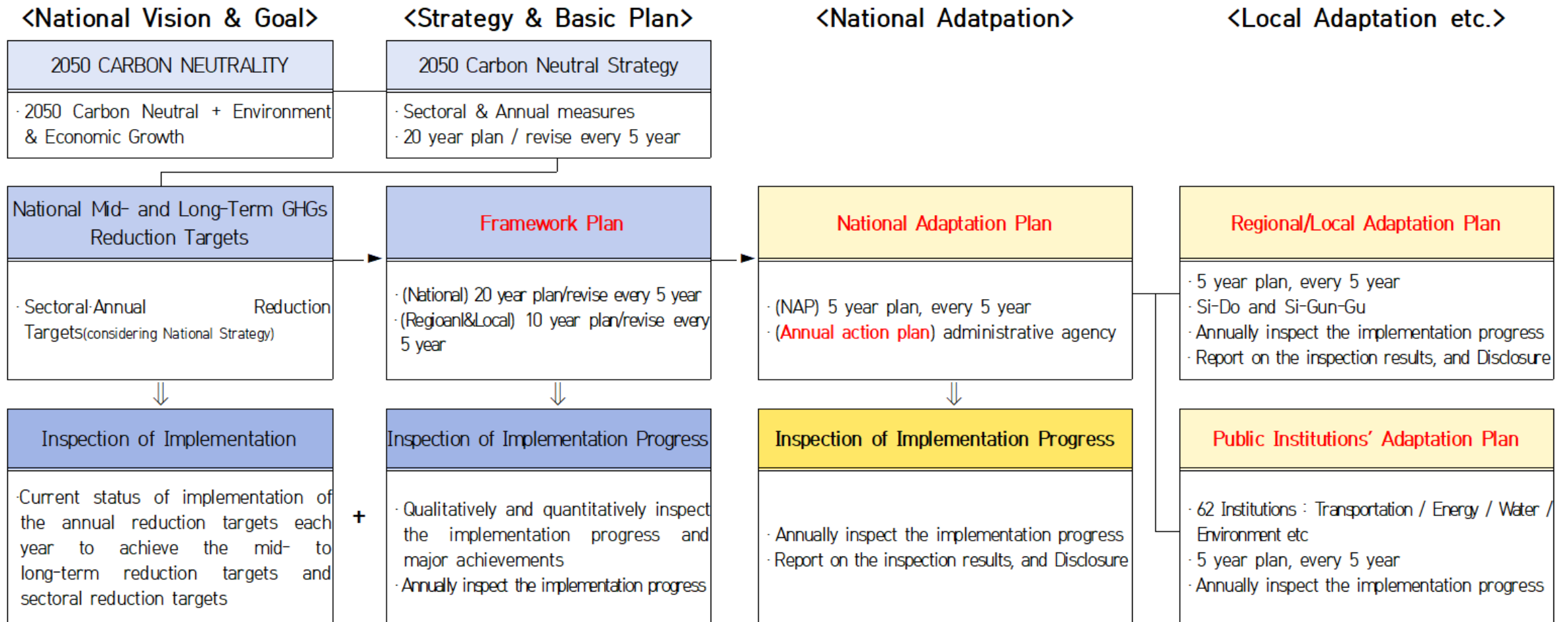
Law and Regulations provides principles and directions

- Legal basis
 - “Framework Act on Carbon Neutrality and Green Growth for coping with Climate Crisis” in 25th March, 2022
- Structure of Framework Act : 11 Chapters and 83 Article
 - Chapter 1. General Provision
 - Chapter 2. National Vision and Greenhouse Gas Reduction Targets
 - Chapter 3. Formulation of National Framework Plan
 - Chapter 4. 2050 Carbon Neutrality and Green Growth Committee
 - Chapter 5. Greenhouse Gas Reduction Policy Measures
 - Chapter 6. Climate Crisis Adaptation Policy Measures
 - Chapter 7. Just Transition
 - Chapter 8. Policy Measures for Green Growth
 - Chapter 9. Transition to Carbon Neutral Society and Spread of Green Growth
 - Chapter 10. Establishment and Operation of Climate Response Fund
 - Chapter 11. Supplementary Provisions



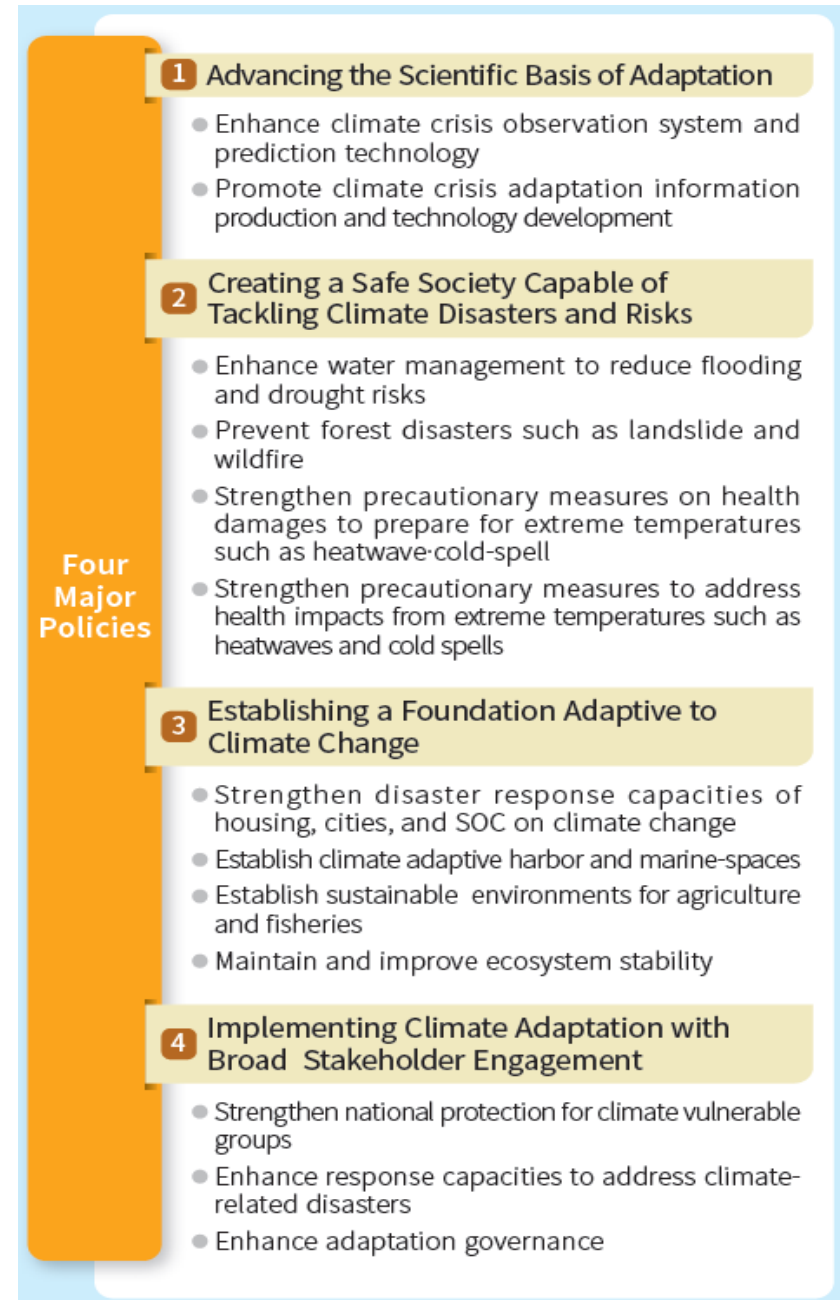
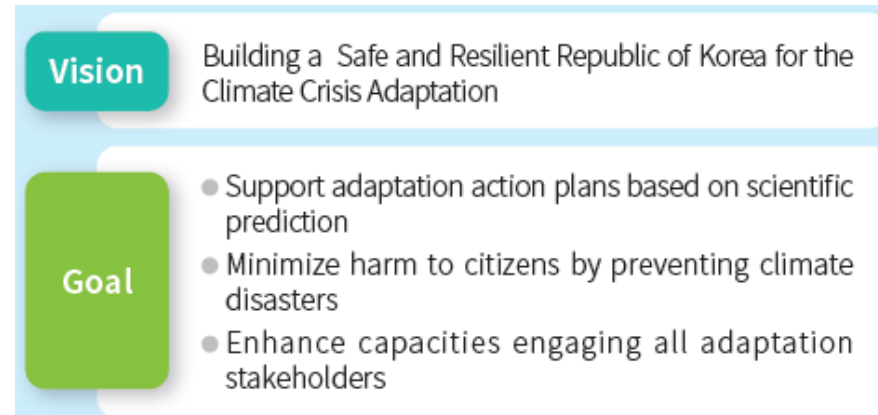
Law and Regulations provides principles and directions

- (5-years) 20-year National Framework plan to achieve the national vision and the mid/long-term reduction targets
- (5-years) National Adaptation Plan / Regional-Local Adaptation Plan/ Public Institution's Adaptation Plan

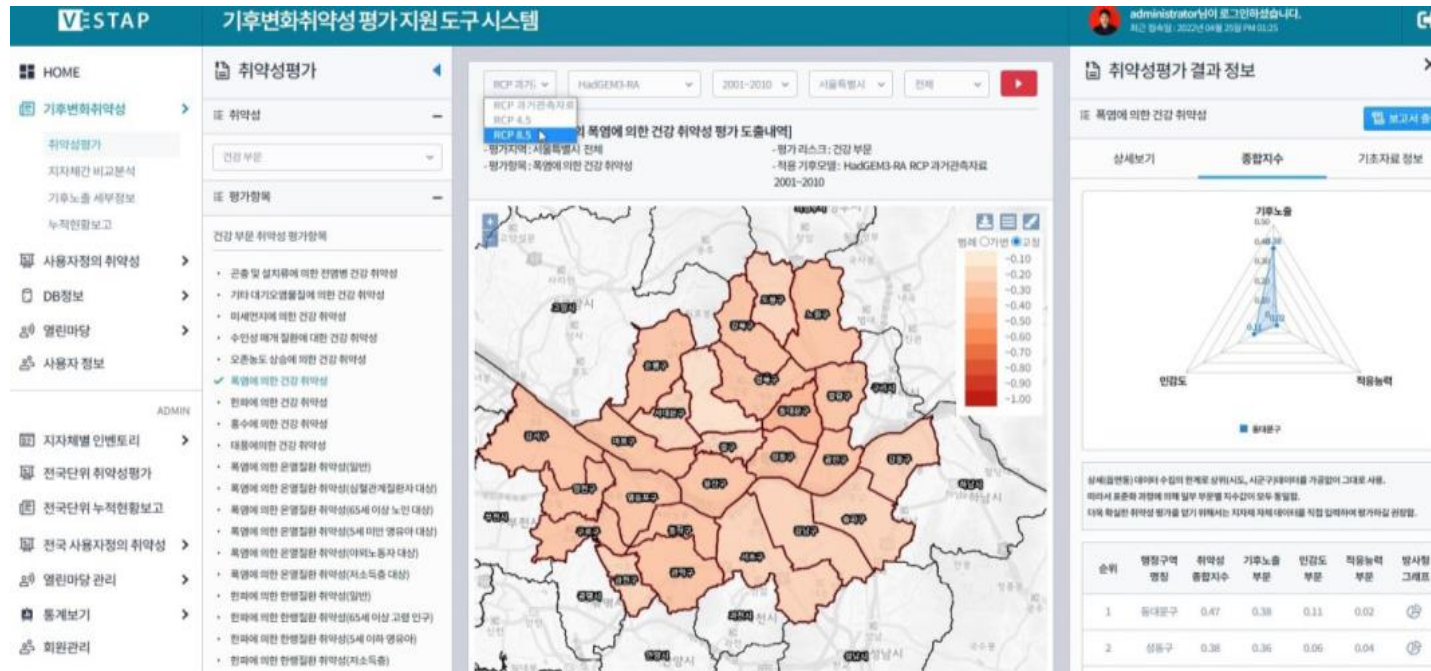
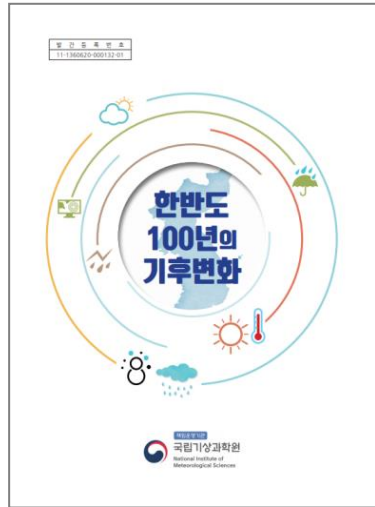


A Plan is a promise of actions to reach the future that people in a society want

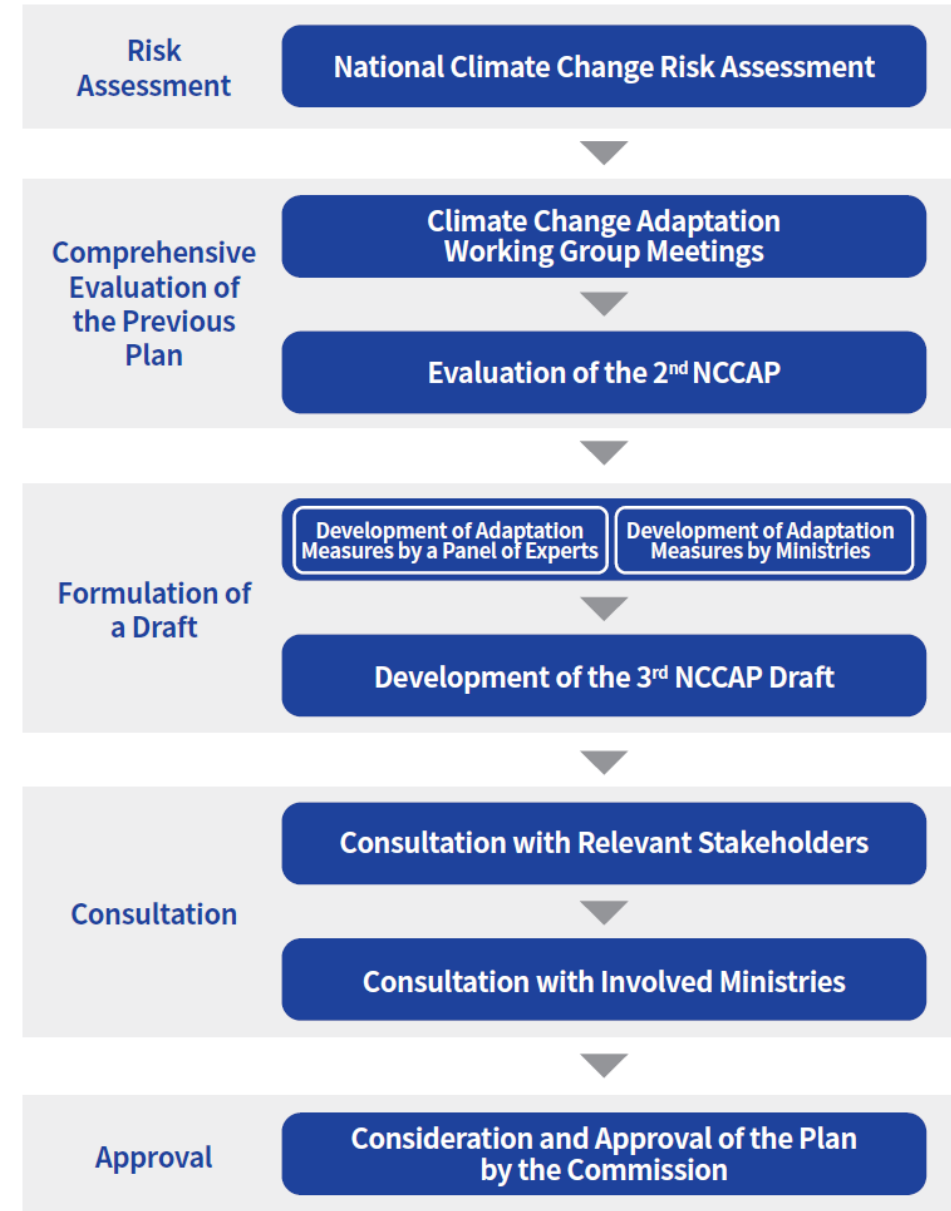
...The currently implemented 3rd NAP(2021~2025) has limitations in effectively preventing and mitigating the damage caused by the escalating climate crisis.Complementary measures are needed, such as *enhancing on-ground action plans and strengthening adaptation infrastructure across all societies.*



Science provides data and criteria for decision-making



<Planning Process of the Third NAP>



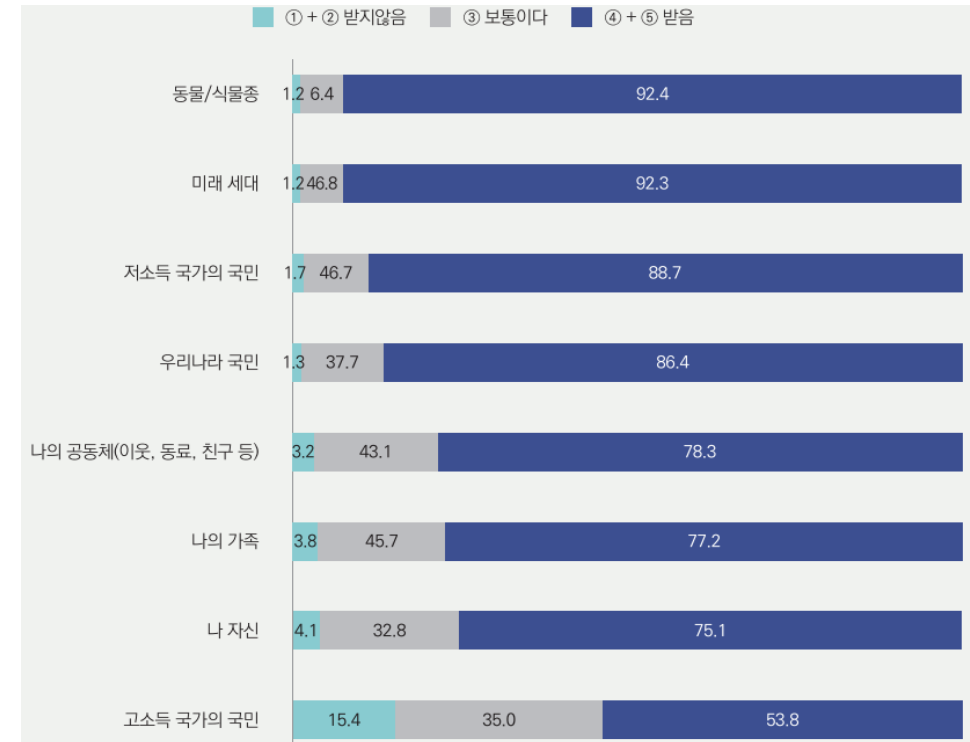
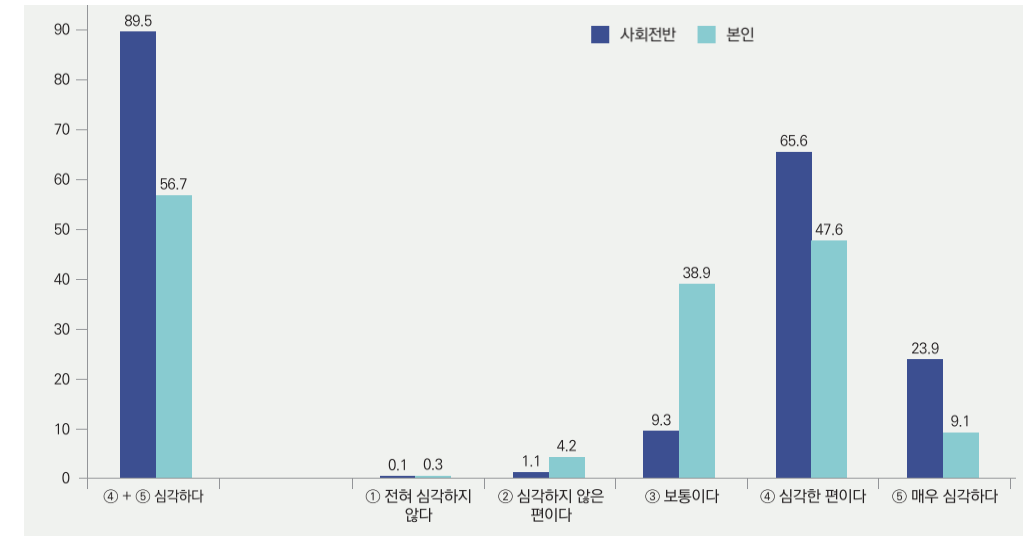
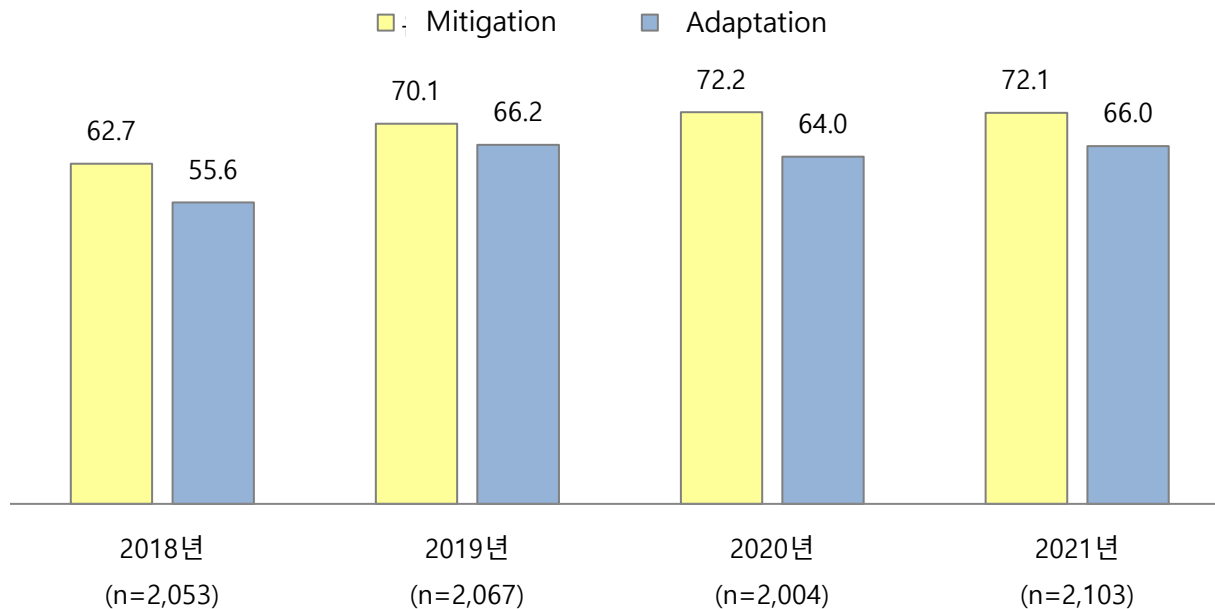
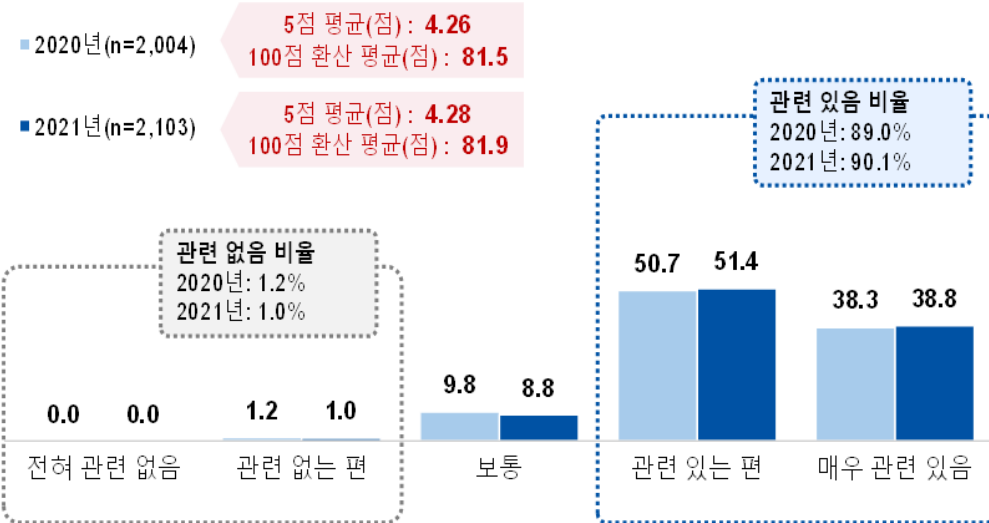
What is **your citizens** perspective about Climate Change?

The Eagle Creek fire was first reported at 4 p.m. on Saturday, and quickly grew to 3,000 acres overnight as winds ripped through the gorge. Hikers were stranded and rescued, and evacuations were ordered for nearby communities over the weekend. After six days, [Eagle Creek fire containment is just at 5%](#) says the Oregonian, [having burned approximately 31,000 acres](#), which is about one-third the size of Portland.

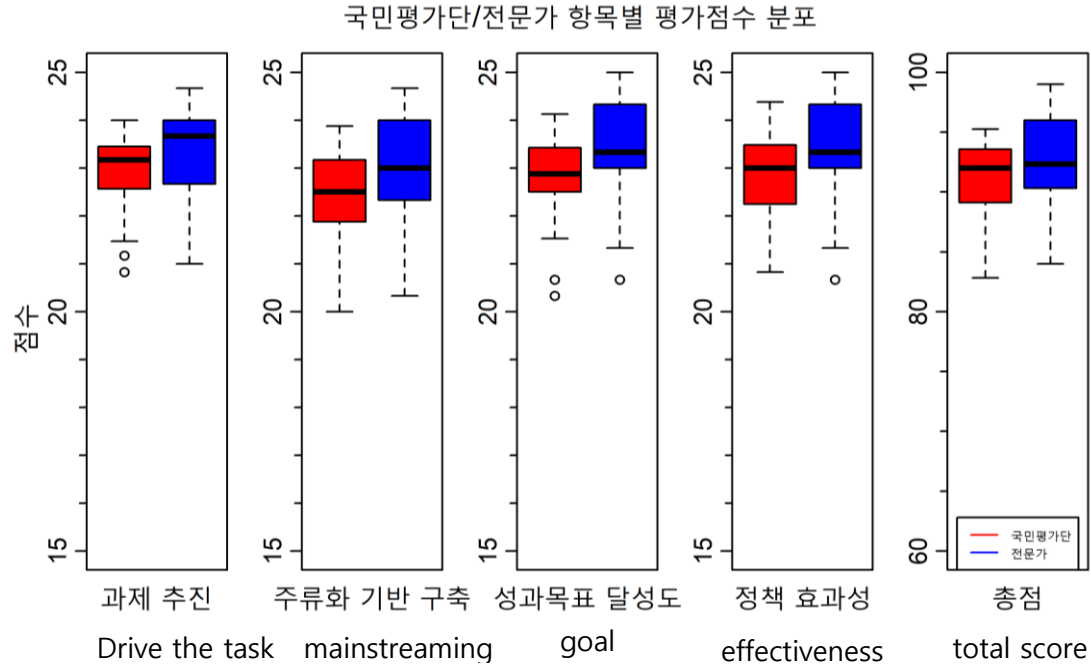


"The golfers and I were not actually in any danger," says McCluer. "When I was done taking pictures, I walked over to them and we talked about how crazy and surreal and horrifying this event is,"

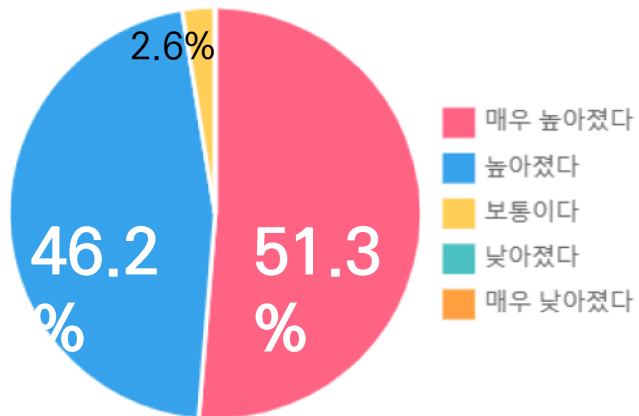
Lessons learned from Adaptation Phase 1.0



Lessons learned from Adaptation Phase 1.0

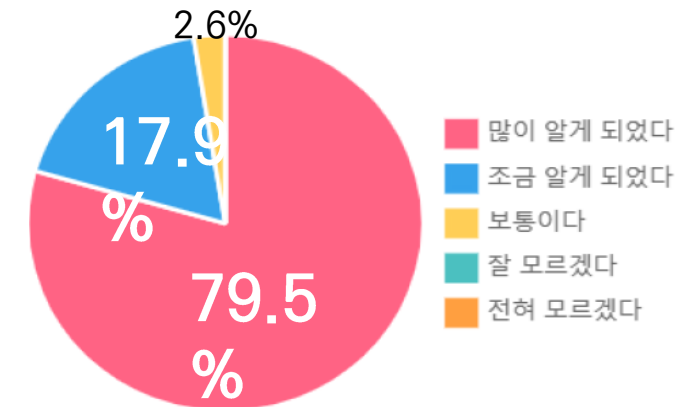


- Through the Citizen Panel, we can understand the effectiveness and perception of Adaptation Policies
- The evaluation scores of the citizens panel were generally lower than those of the expert panel, indicating the need for improved perceived effectiveness and efficacy of adaptation policies.



Participation in NAP M&E has led to a higher understanding of NAP.....

Through the activities of the Citizen Panel, there has been an increased understanding of climate crisis adaptation and adaptation policies.....



From Adaptation phase 1.0 to Adaptation phase 2.0

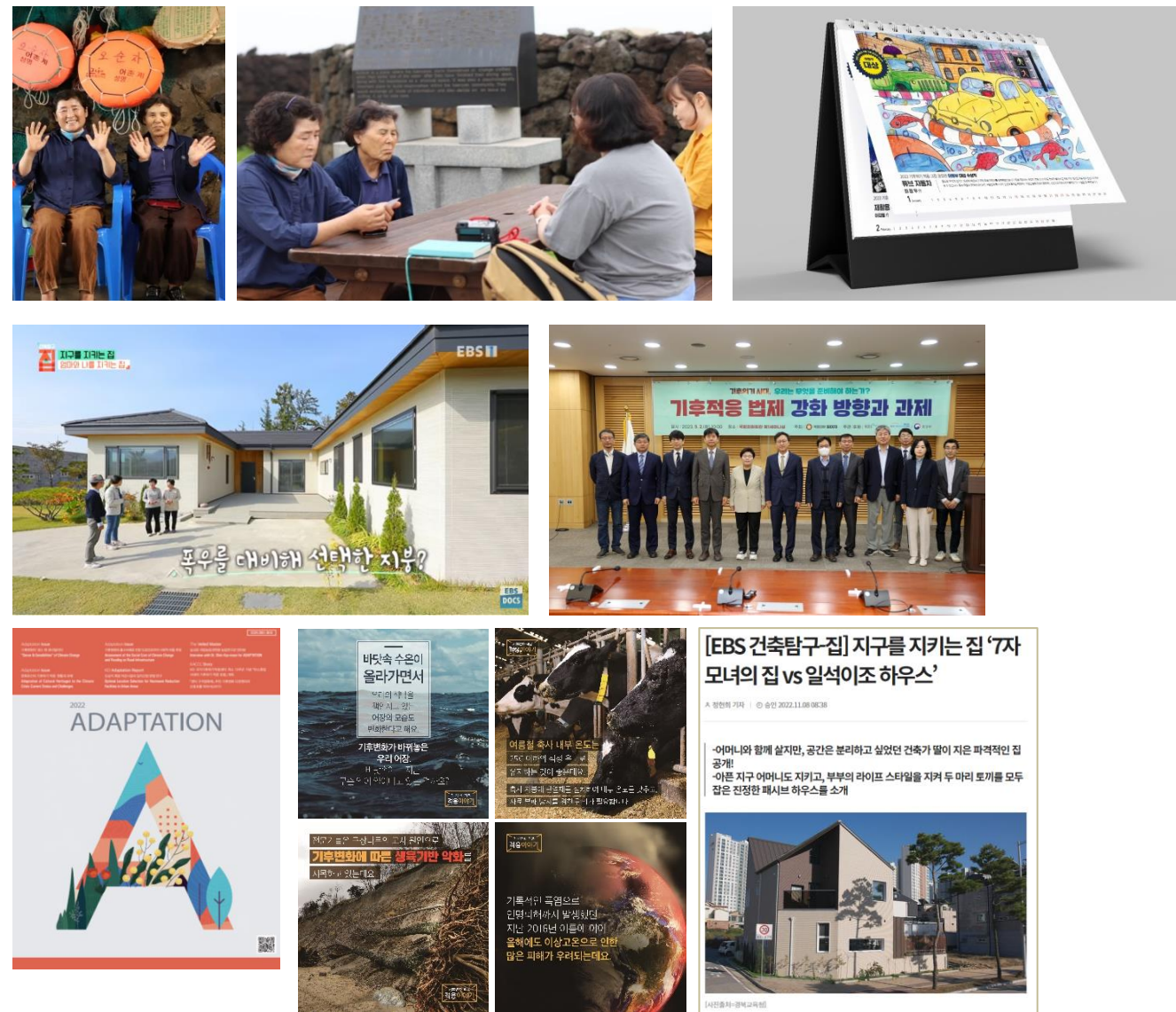
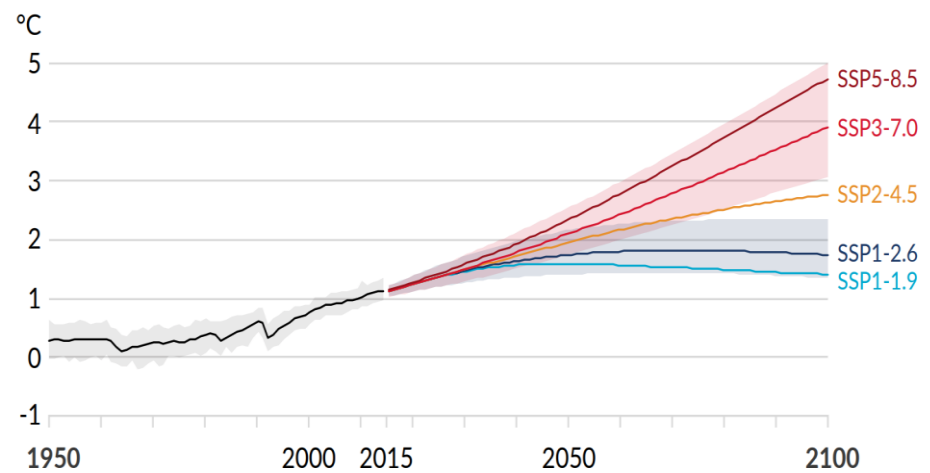
- Continued investment in research and development aimed at reducing future uncertainties is essential, and diverse research outcomes must be made available as accurate information.
- Efforts should be continuously made to ensure the promotion of an adaptation framework.
- Efforts should be directed towards mainstreaming adaptation within policies across various sectors, ensuring its practical implementation.
- Efforts should be undertaken to engage a broader range of stakeholders and generate interest in adaptation issues and policies.
- Countries should discover successful examples to inform local governments, and local governments should find solutions to address local issues and share them.
- We need to make the concept of adaptation relatable from an individual to a community level, ensuring that information can easily enter through various approaches and pathways.



From Adaptation phase 1.0 to Adaptation phase 2.0

- We need to consider various ways of delivering information.
- It is essential to facilitate ongoing discussions and sharing of climate change and adaptation issues in daily life

Scenario	Near term, 2021–2040		Mid-term, 2041–2060		Long term, 2081–2100	
	Best estimate (°C)	Very likely range (°C)	Best estimate (°C)	Very likely range (°C)	Best estimate (°C)	Very likely range (°C)
SSP1-1.9	1.5	1.2 to 1.7	1.6	1.2 to 2.0	1.4	1.0 to 1.8
SSP1-2.6	1.5	1.2 to 1.8	1.7	1.3 to 2.2	1.8	1.3 to 2.4
SSP2-4.5	1.5	1.2 to 1.8	2.0	1.6 to 2.5	2.7	2.1 to 3.5
SSP3-7.0	1.5	1.2 to 1.8	2.1	1.7 to 2.6	3.6	2.8 to 4.6
SSP5-8.5	1.6	1.3 to 1.9	2.4	1.9 to 3.0	4.4	3.3 to 5.7



Thank you

JIYOUNG SHIN <SJIRANG@KEI.RE.KR>



KEI 국가 기후위기 적응센터 연구진